

### HEAD SOUTH!

Twenty two miles south on Highway 51 is Mercer, WI...stop for a photo opportunity at the huge 2,000 pound Loon...visit the great greenhouses and shops offered in the small Northern Wisconsin town...drive just across the highway to Townline Road which takes you to several cranberry shops open all summer - in the fall, cranberry tours are offered...rent a boat for the day and cruise along the shores of the many wonderful lakes the area has to offer...visit the Minocqua area boardwalk shops and antique malls.

### HEAD EAST!

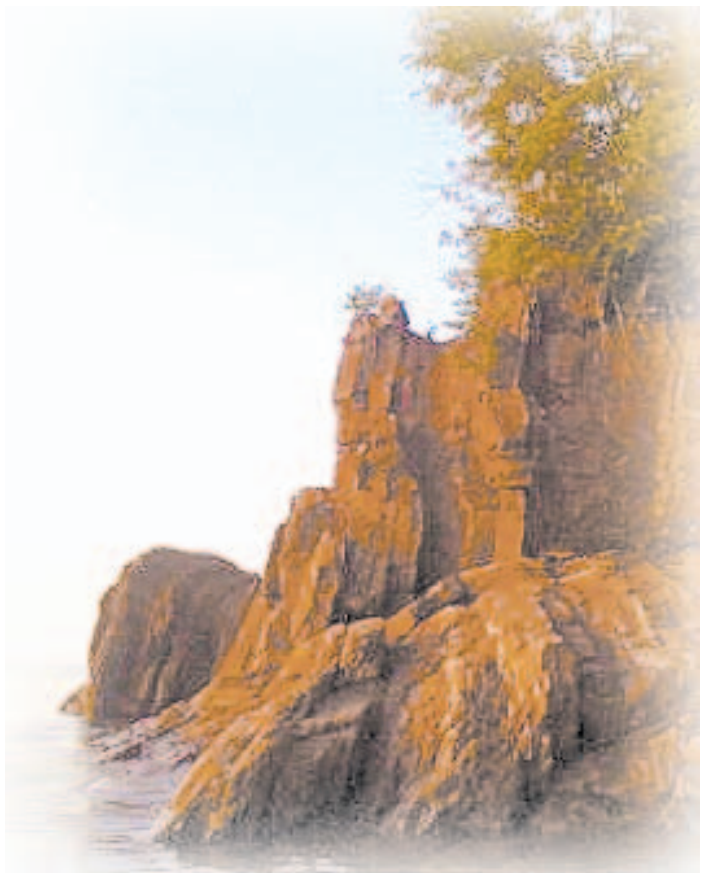
Pack your suntan lotion and fishing rods - it's off to Lake Gogebic...hike to scenic Alligator Eye for an eagle's eye view of the lake; it's quite spectacular...try camping at the Lake Gogebic State Park or the Gogebic County Park at Lake Gogebic...guarantee yourself a trout with no fishing poles required at Watersmeet Trout Hatchery...paddle to the spectacular High Lake in the Sylvania Wilderness Area...visit Ottawa Visitor Center in Watersmeet to see wonderful short videos and naturalist programs every Thursday evening in the summer, then go to the gift shop...make your way to Bond Falls Flowage to see the waterfalls. Getting dark out? Park on Robbins Pond Road to see the Paulding Mystery Light.

### TIME TRAVELER!

Enter another time zone by traveling outside the mining country of the Gogebic Range and into copper mining with a real mine tour at Adventure Mine (906-883-3371)...shop for antiques and gifts in the quaint town of Ontonagon...enjoy lunch at a local restaurant...tour the Ontonagon Museum & Lighthouse...head off to Hwy 45 to Bond Falls Flowage, a great place to swim, fish and relax...catch a few fireflies and head back to Ironwood for a restful night's sleep.

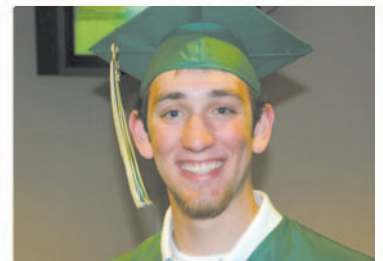
### A SCENIC DRIVE!

Pack the camera, hiking shoes and water toys. Today we are off to the Porcupine Mountains, just past Wakefield. Take Co. Rd. 519 to Presque Isle Park. Hike around Presque Isle in the Porkies with two spectacular waterfalls, Manebezho and Manido Falls, view Lake of the Clouds, Summit Peak. Take in as many miles of the Porkies hiking trails as you like, or enjoy the casual drive through the park. Drive back through Silver City with its great sand beaches and you might even spot a black bear. Take the other route home: drive to Bergland, then Ironwood.



[www.gogebic.edu](http://www.gogebic.edu)

- New programs
- New classes
- On campus housing



Take a good look at today's GCC!  
"Exceptional quality" at an affordable cost.  
Visit us today!



**GOGEBIC**  
COMMUNITY COLLEGE

Ironwood, Michigan

906-932-4231 or 800-682-5910